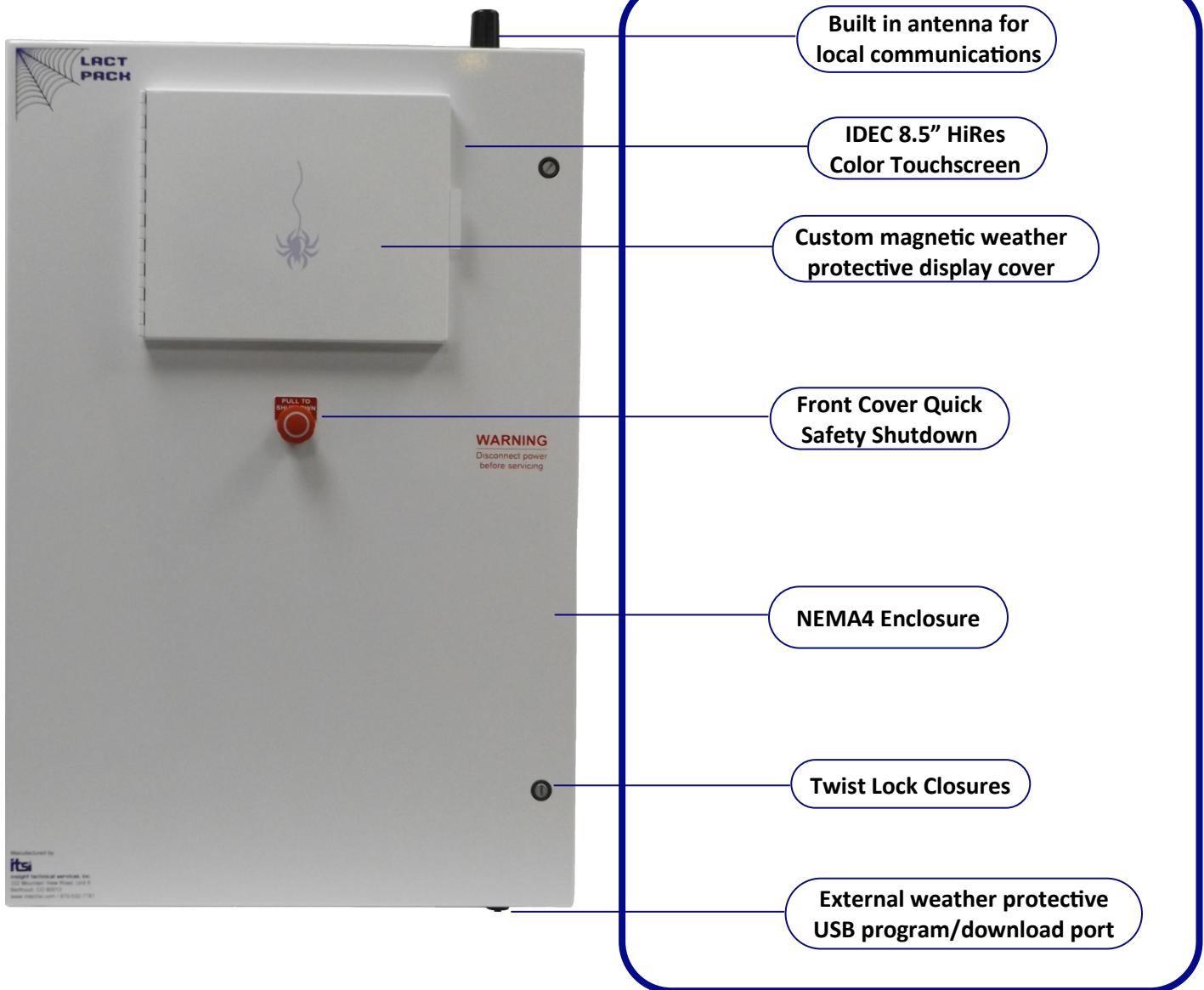


LACT-PACK



The ITSI™ LACT-PACK Controller is designed to open and close sales valves (bottom) and production valves (top) based on tank level heights. The control panel will support and control up to 20 actuators in any combination of sales and production valves. It can operate in Sales Valve Auto-Mode, Sales Valve Manual Mode, and Weathering Mode. It includes Top Production Valve Control Auto Mode, and Top Production Valve Control Manual Mode for top tank production. It is designed to interface to local devices such as LACT control equipment, flow measurement, level sensors, and other equipment on the tank battery location. The LACT-PACK provides data logging and FTP downloads, as well as local data downloading. ITSI can provide any custom design to fit your specific needs.

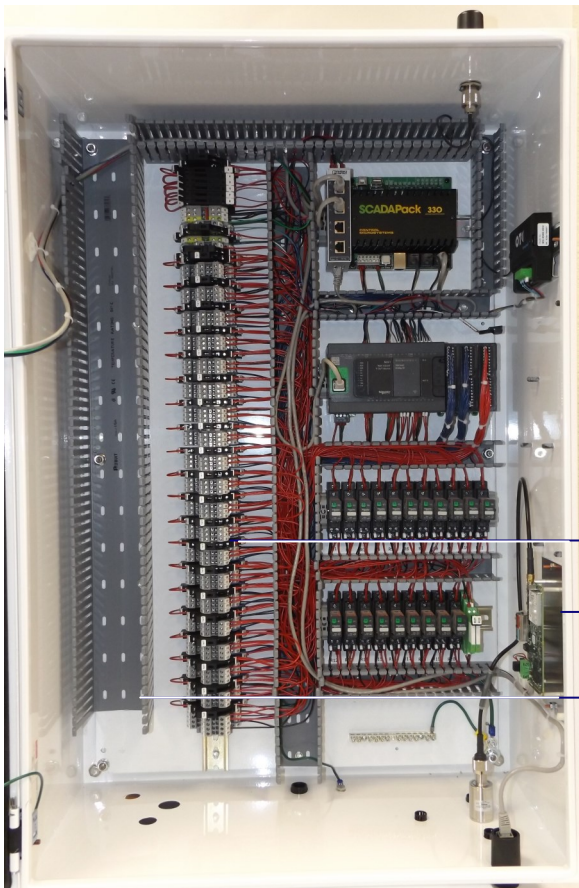
LACT-PACK



Specifications			
Voltage	24 VDC	Tank (Actuator) Support	20 Tanks Standard
Power Consumption	13.88 Watts at 24VDC/Solar sized to installation location	LACT-PACK XIO	Supports 20 Additional tanks with Lact-Pack XIO
Amperage	16 Amp Hour Daily	Device Support	Connects to other equipment via Ethernet or Serial
Enclosure Dimensions	36"H X 30"W X 12"	Protocol Support	Modbus, Modbus TCP
Enclosure	NEMA4	Display Screen	IDECC Touch HiRes 8.4" 65K Color



Other Information	CUSTOM ENGINEERED DESIGNS
Equipped for radio installation . Can support multiple manufacturers	ITSI can provide a custom design configuration to meet your specific needs. If you need on board I/O or other specific needs, contact us and let us design a model that works for you.
Connects Easily with ITSI SolarRack (optional order)	
Data Logging and FTP data transferring via radio and USB	



- Fused Terminals
- Radio Mount Location on welded studs
- User Wire Entry Access for easy wiring

insight technical services, inc.

332 Mountain View Road, Unit 8
 Berthoud, CO 80513
 Phone: 970-532-7781
 Fax: 970-532-7772
www.intechsi.com

