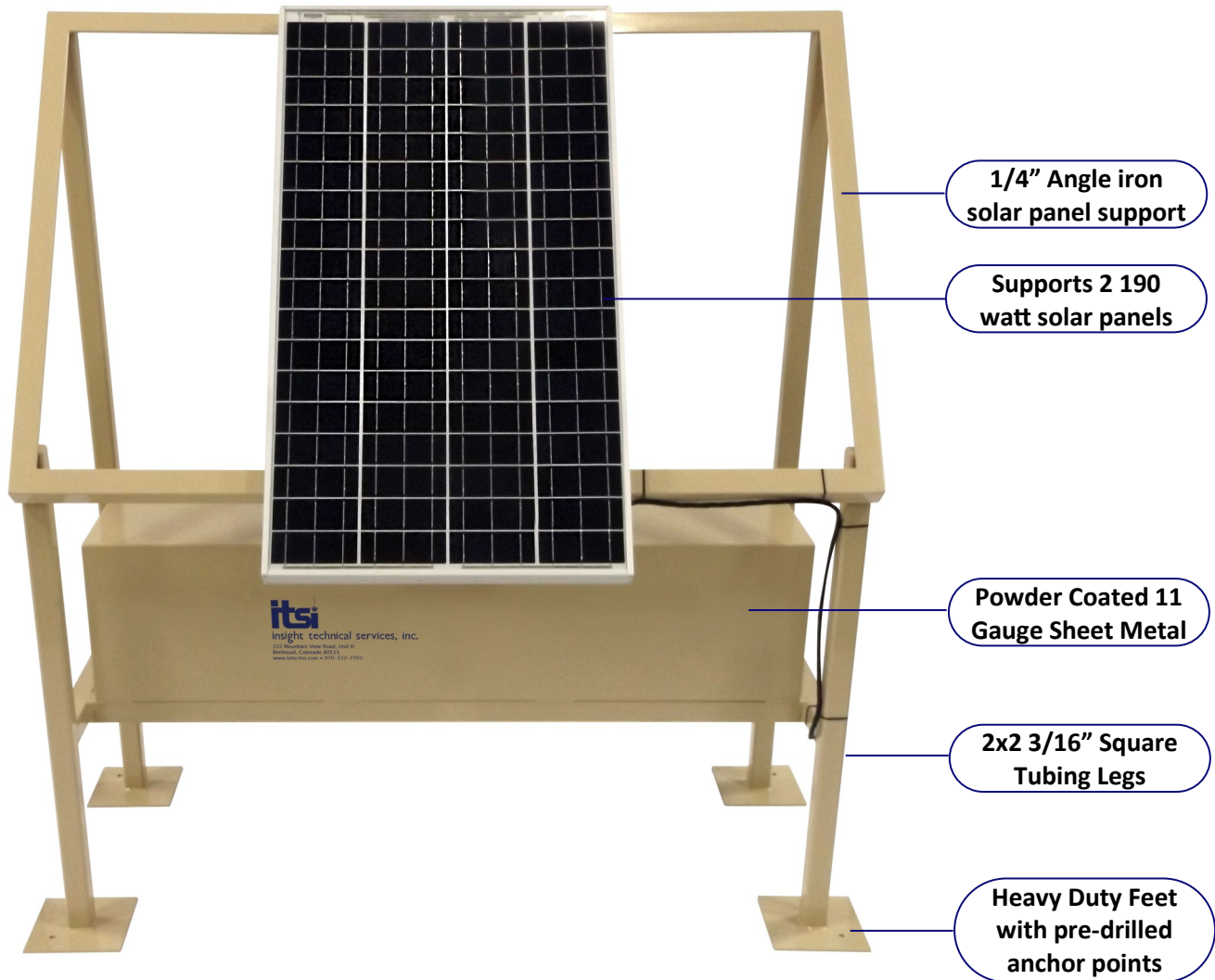


# SOLAR-RACK



The ITSI™ Solar-Rack is a heavy duty solar panel rack with a welded attached battery enclosure with a security door to help prevent battery theft. The ITSI™ Solar-Rack can hold two, 190 watt solar panels or a variety of other sized solar panels, plus up to eight 110 amp batteries. Designed for quick installation, with quick battery connects. Manufactured from powder coated 3/16" square tubing and 1/4" angle iron. All tubing openings are sealed to prevent water from corroding the frame structure. Eight inch square by 1/4" square steel plate feet hold the structure securely to the ground. Pre drilled holes allow for the ITSI™ Solar-Rack to be bolted to a concrete pad or placed securely at any location.



# SOLAR-RACK

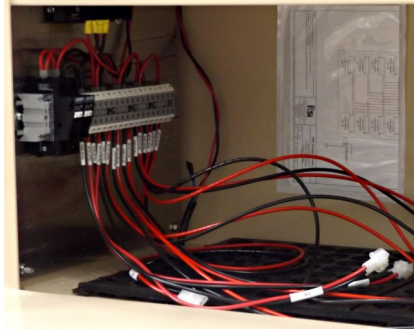
## Specifications

Voltage	12 or 24 VDC
Battery Capacity	Up to 8, 110 Amp Batteries
Upper Dimensions	71½"H X 64½"L X 28½"W
Base Dimension	70"L X 32"W

## Other Information

- Comes standard with a 10 AMP 24V charger
- Comes standard with a single 190 watt solar panel
- Batteries not included in base system (optional order)
- Custom Configurations Available

Wired for up to eight batteries. Comes standard with a 24VDC 10Amp Solar Charger. Wiring Schematic Enclosed.



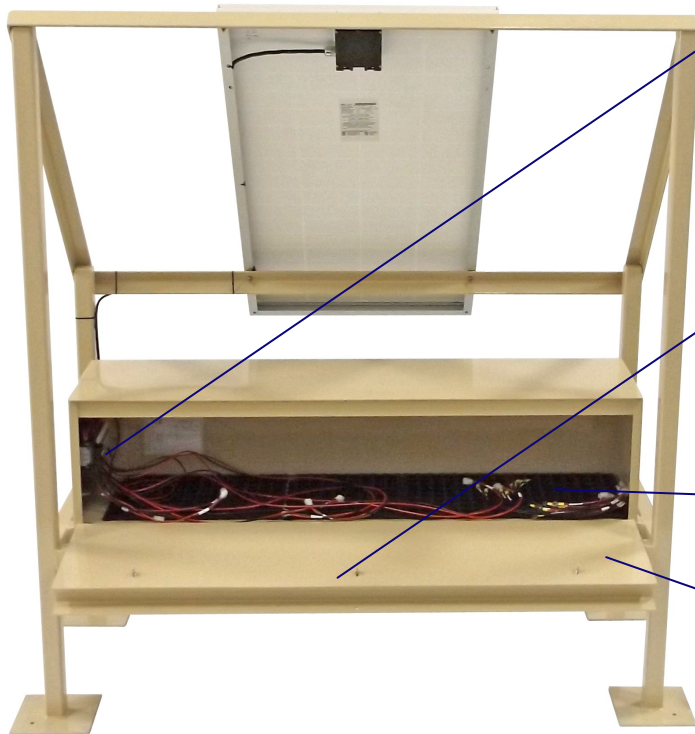
Quick disconnect from the power strip to the battery for added safety. Fused Input.



Heavy duty welded hasp and lock help protect batteries from theft

Rubber Mat to protect batteries

Heavy duty door that opens wide for installing and wiring batteries



insight technical services, inc.

332 Mountain View Drive, Unit 8  
Berthoud, CO 80513  
Phone: 970-532-7781  
Fax: 970-532-7772  
[www.intechsi.com](http://www.intechsi.com)

